

あっぷるぱい



Apple History Research Center home page



A card game for 2 to 4 players

How to play APPLEPIE

It's a card game easier than Mahjong!

How to make sets

When you collect 4 sets of 3 cards, you get a WIN!!!

Same kind of apple (20 points)



The same kind of tools (30 points)



The same important figure (40 points)



Three cherry blossoms (40 points)



Red sequential numbers (10 points)



Yellow sequential numbers (10 points)



Pink sequential numbers (10 points)



Cherry blossoms special (50 points)



One of each tool (20 points)



One of each the important figures (30 points)



Kikuchi-san Special (50 points)



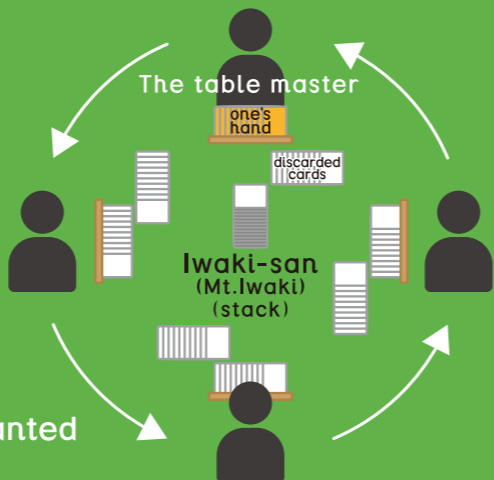
One of each of the important figures special (40 points)



Only one of the four Kikuchi-san cards has a cherry blossom Kikuchi-san. If you use Kikuchi-san with Cherry Blossoms, you get **10 extra points!** You can use Cherry Blossomes Kikuchi-san as either a Kikuchi-san card or as a Cherry Blossom card.

How to play the game

- 1 Decide the table master by playing janken (rock-paper-scissors) and deal out 11 cards each player. Place the remaining cards in the center (It's called Iwaki-san, a famous mountain in the Tohoku region Japan.)
- 2 Starting with the player with the highest card, draw a card from the rock pile in a counterclockwise direction and discard an unwanted card. The discarded cards are placed in a row, slightly shifted so that others can easily see them.
- 3 Only the person who collects four sets of cards the fastest gets a point.
- 4 The scores are noted down, and the ranks are determined by the total score.
- 5 If the table master wins, the player gets an extra 10 points.



When two people play,

- It is faster to settle the game if you play with 100 cards, two rows of red, yellow, and pink.
- It is easier to arrange the hands by limiting the number of hands to half.

Your apple orchard

- It might be fun to make your own original roles using plain white cards. For example, make a hand with your favorite apples or tools and your name.

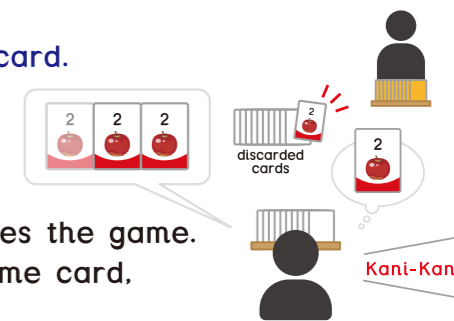
There are lines when you advance the game!

If you feel like you want a card that another player has discarded. You can say...

"Kani-Kani".

It means "I'm sorry" in Tsugaru dialect!

- When you have two cards of the same card, you can get it if another player discards the same card. At that time, it is called "kani-kani".
- When you "kani-kani", you put the three cards you have together so that everyone can see them, and discard one of the cards you don't need.
- The next person in turn who calls "kani-kani" resumes the game.
- If more than one person calls "kani-kani" for the same card, the person whose turn comes first has priority.
- 10 points are deducted for each "kani-nani".



When going up with one more card. It's called...

"Mouwanka".

It means "a little more" in Tsugaru dialect.

- When you are about to go up with one more card, you put the discarded card on the side as a sign of power-up.
- The player who has "Mouwanka" can receive the last card of any waiting hand to go up. You can play with sequential numbers of the same color, 3 of each tool at a time, or 3 of each important figure at a time.
- Even after saying "Mouwanka", a player may secretly change their hand.



When you go up with a card discarded by another player...

"Meyagu".

It means "I'm sorry, thank you" in Tsugaru dialect.

- When two or more players call "meyagu" for the same card, the first player in turn has priority.
- When there are "meyagu" and "kani-kani" for the same card, "meyagu" has priority.

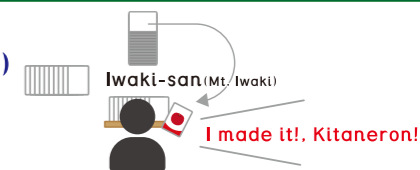


When the last card is drawn from "Iwaki-san".

You can say... "Kitaneron".

It means "I made it! Isn't it great?" in Tsugaru dialect!

- The player that draws the last card gets 30 points. (This is for reaching the top of Iwaki-san. Congratulations!)



Types of cards

There are 4 cards for each group

Aomori-born variety Red group



Yellow variety Yellow group



Variety born outside Aomori Pink group



The important figures



The tools



The cherry blossoms



Kikuchi Tatee-san (Mr. Tatee Kikuchi)

1846~1918

A former Tsugaru Clan samurai, he loved gardening since childhood and actively pursued apple cultivation. He was an employee of the Aomori Prefectural Government in 1875 when the first three apple saplings from the Japanese government arrived. Later, he volunteered to go to an orchard in Nanae-chyo, Hokkaido, where he had a miraculous encounter with an American agricultural engineer, Dr. Boehmer. This encounter became the cornerstone of making the Tsugaru region a major apple-growing region. Furthermore, Mr. Kikuchi was so impressed by Mr. Kakuya Uchiyama, a former samurai of the Tsugaru domain, who planted 20 cherry trees inside Hirosaki Castle, lamenting the castle's unkempt and dilapidated condition, Mr. Kikuchi himself planted 1,000 cherry trees in 1882. This led to Hirosaki Castle becoming a famous cherry blossom viewing spot. It can be said that Mr. Tatee Kikuchi left behind two major industries: apple cultivation and cherry blossom tourism.



photo by the Aomori Apple Association

Tonosaki Kashichi-san (Mr. Kashichi Tonosaki)

1859~1924

Mr. Tonosaki's cultivation techniques and teaching ability were so outstanding that there were always people asking him to teach them, and he himself traveled outside of the prefecture to teach others. He was the first person in the Tsugaru region to harvest apples in apple bags. Whenever an innovative technique was introduced, he would do it himself. He was always a model of cultivation. This is the reason why he is called the "God of Apples". On September 24, 1908, when the Crown Prince (later Emperor Taisho) came to visit, he saw Mr. Kashichi Tonosaki's apple fields and was guided there by Mr. Tonosaki himself. A monument was erected at the place (Hirosaki City Jyumoku), and "Apple Ritual" is still held on September 24 every year.

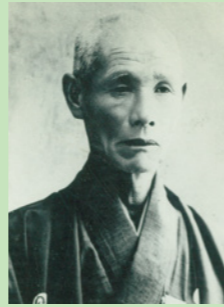


photo by the Aomori Apple Association

Shibukawa Denjiro-san (Mr. Denjiro Shibukawa)

1898~1991

Born the second son of a wealthy merchant in Kuroishi City. After graduating from Aomori Prefectural Agricultural School, he became the manager of an apple orchard in the suburbs of Hirosaki City. He was drafted into WWII and demobilized after the war, and helped establish the Aomori Apple Association. The apple fields were in disrepair. This is because they suffered from heavy snowfall during the war, and there was no one to take care of them. Mr. Shibukawa contributed to the revitalization of deserted apple fields. Mr. Shibukawa led the people of that time technically and mentally to "revive" the apple industry by giving orders in a loud voice. It is said that he was so friendly that people called him by the nickname of "Shibuden".



photo by the Aomori Apple Association

The Hirosaki Castle Cherry Blossom Guardian 120 points

Collect 3 cards of Mr. Kikuchi and 3 cards of cherry blossoms. Add the scores of the remaining two pairs.

$$\begin{matrix} \text{Kikuchi} & \text{Kikuchi} & \text{Kikuchi} & \text{Cherry Blossom} & \text{Cherry Blossom} & \text{Cherry Blossom} & + & \text{points of one set} & + & \text{points of one set} & = & \text{total points} \end{matrix}$$

Because Kikuchi-san is the person who planted 1000 cherry trees in Hirosaki Castle

The God of Apples 110 points

Collect 3 cards of Tonosaki-san and any 3 of the same tools. Add the points of the remaining 2 sets.

$$\begin{matrix} \text{Tonosaki} & \text{Tonosaki} & \text{Tonosaki} & \text{3 cards of the same tool} & + & \text{points of one set} & + & \text{points of one set} & = & \text{total points} \end{matrix}$$

Because Tonosaki-san's cultivation technique is excellent and he is called the "God of Apples".

The Recovery of Apple Cultivation 100 points

Collects 3 Shibukawa-san cards and any 3 of the same apples. Add the points of the remaining 2 sets.

$$\begin{matrix} \text{Shibukawa} & \text{Shibukawa} & \text{Shibukawa} & \text{3 cards of the same apple} & + & \text{points of one set} & + & \text{points of one set} & = & \text{total points} \end{matrix}$$

Because Shibukawa-san restored the devastated apple fields after the war.

The earliest Harvest 120 points

Collect 3 cards of each of the 3 colors marked "1". Add the points of the remaining 1 set.

$$\begin{matrix} 1 & 1 & 1 & 1 & 1 & 1 & 1 & 1 & 1 & + & \text{points of one set} & = & \text{total points} \end{matrix}$$

Because "1" is the first to be harvested.

The Late Harvest 120 points

Collect 3 cards of each of the 3 colors marked "9". Add the points of the remaining 1 set.

$$\begin{matrix} 9 & 9 & 9 & 9 & 9 & 9 & 9 & 9 & 9 & + & \text{points of one set} & = & \text{total points} \end{matrix}$$

Because "9" is the last to be harvested.

The important figures Cherry Blossom Viewing Party 280 points

Collect 3 cards each of 3 great persons and 3 cherry blossoms.

$$\begin{matrix} \text{Kikuchi} & \text{Kikuchi} & \text{Kikuchi} & \text{Tonosaki} & \text{Tonosaki} & \text{Tonosaki} & \text{Shibukawa} & \text{Shibukawa} & \text{Shibukawa} & \text{Cherry Blossom} & \text{Cherry Blossom} & \text{Cherry Blossom} \end{matrix}$$

Let's imagine that three important figures are viewing cherry blossoms in Hirosaki Castle Park.

The Tsugaru Plain 200 points

Collect 6 cards of each of the 7 types of important figures, tools and cherry blossoms, and 1 piece of each of the 3 colors "1" and "9".

$$\begin{matrix} \text{Kikuchi} & \text{Tonosaki} & \text{Shibukawa} & \text{Cherry Blossom} & \text{Apple} & \text{Apple} & \text{Apple} & \text{Apple} & \text{Apple} & \text{Apple} & 1 & 9 & 1 & 9 & 1 & 9 \end{matrix}$$

The Harvest season 80 points

Collect 1 card each of "1" to "9" of 1 color. Add points for the remaining 1 set.

$$\begin{matrix} 1 & 2 & 3 & 4 & 5 & 6 & 7 & 8 & 9 & + & \text{points of one set} & = & \text{total points} \end{matrix}$$

The Now is the time to eat 100 points

Collect 3 cards of any sequential numbers of each color. Add the points of the remaining 1 set.

$$\begin{matrix} 4 & 5 & 6 & 4 & 5 & 6 & 4 & 5 & 6 & + & \text{points of one set} & = & \text{total points} \end{matrix}$$

Eating Apples with a Smile 80 points

Collect 6 pairs of 2 of the same cards each.

$$\begin{matrix} 1 & 1 & 5 & 5 & 3 & 3 & 8 & 8 & \text{Kikuchi} & \text{Kikuchi} & \text{Shibukawa} & \text{Shibukawa} \end{matrix}$$

Eat All Apples with a Smile 100 points

Collect 6 pairs of 2 same cards except apples.

$$\begin{matrix} \text{Kikuchi} & \text{Kikuchi} & \text{Tonosaki} & \text{Tonosaki} & \text{Shibukawa} & \text{Shibukawa} & \text{Apple} & \text{Apple} & \text{Apple} & \text{Apple} & \text{Apple} & \text{Apple} \end{matrix}$$

List of hands

The All Apples 100 points

Collect 4 sets of cards with all apples.

$$\begin{matrix} 5 & 5 & 5 & 1 & 2 & 3 & 7 & 8 & 9 & 4 & 4 & 4 \end{matrix}$$

The All Apples Special 120 points

Collect 4 sets of cards with all apples of the same color.

$$\begin{matrix} 1 & 1 & 1 & 2 & 3 & 4 & 6 & 6 & 6 & 7 & 8 & 9 \end{matrix}$$

The Apple Cultivation 180 points

Collect 6 pairs of 2 of the same cards each.

$$\begin{matrix} \text{Cherry Blossom} & \text{Cherry Blossom} & \text{Apple} & \text{Apple} & \text{Apple} & \text{Apple} & \text{Apple} & \text{Apple} & \text{Kikuchi} & \text{Tonosaki} & \text{Shibukawa} \end{matrix}$$

The Beginning Apple Cultivation in AOMORI 220 points

Collect 3 cards of Mr. Kikuchi, 3 cards of KOKKOU and 3 cards of KOUGYOKU. Add points for the remaining 1 set.

$$\begin{matrix} \text{Kikuchi} & \text{Kikuchi} & \text{Kikuchi} & 6 & 6 & 6 & 9 & 9 & 9 & + & \text{points of one set} & = & \text{total points} \end{matrix}$$

Because the varieties existing at that time when Kikuchi-san started growing apples were KOUGYOKU (pink6) and KOKKOU (pink9)